

SIZES 18 MONTHS TO 5T
A FISHSTICKS DESIGNS SEWING PATTERN
COPYRIGHT 2011

All content within this document including but not limited to the pattern and instructions is copyrighted. Electronic reproduction and/or distribution is prohibited by law.

Instructions for sewing this pattern and patterns for sizes newborn to 12 months can be found in the Winter 2010/Spring 2011 Issue of Stitch Magazine which can be found at www.interweavestore.com.

Fabric Yardage:

1 yard of print or solid interlock, ribbed knit or jersey for body of top
1 yard of print or solid interlock, ribbed knit or jersey for body of pants
 $\frac{1}{4}$ yard of cotton/lycra or cotton/spandex ribbing for neckline and cuffs

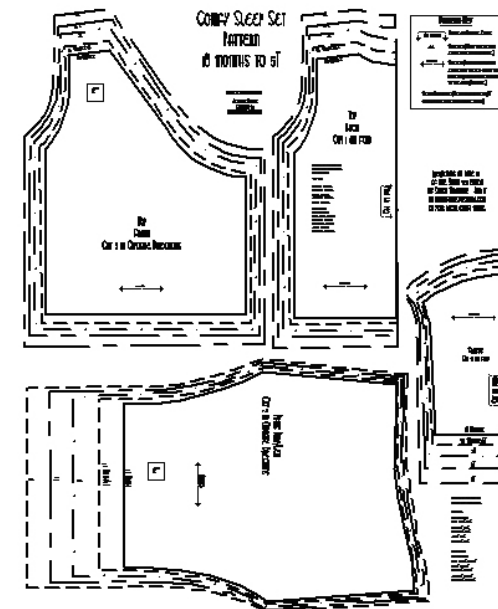
Preparing Your PDF Pattern

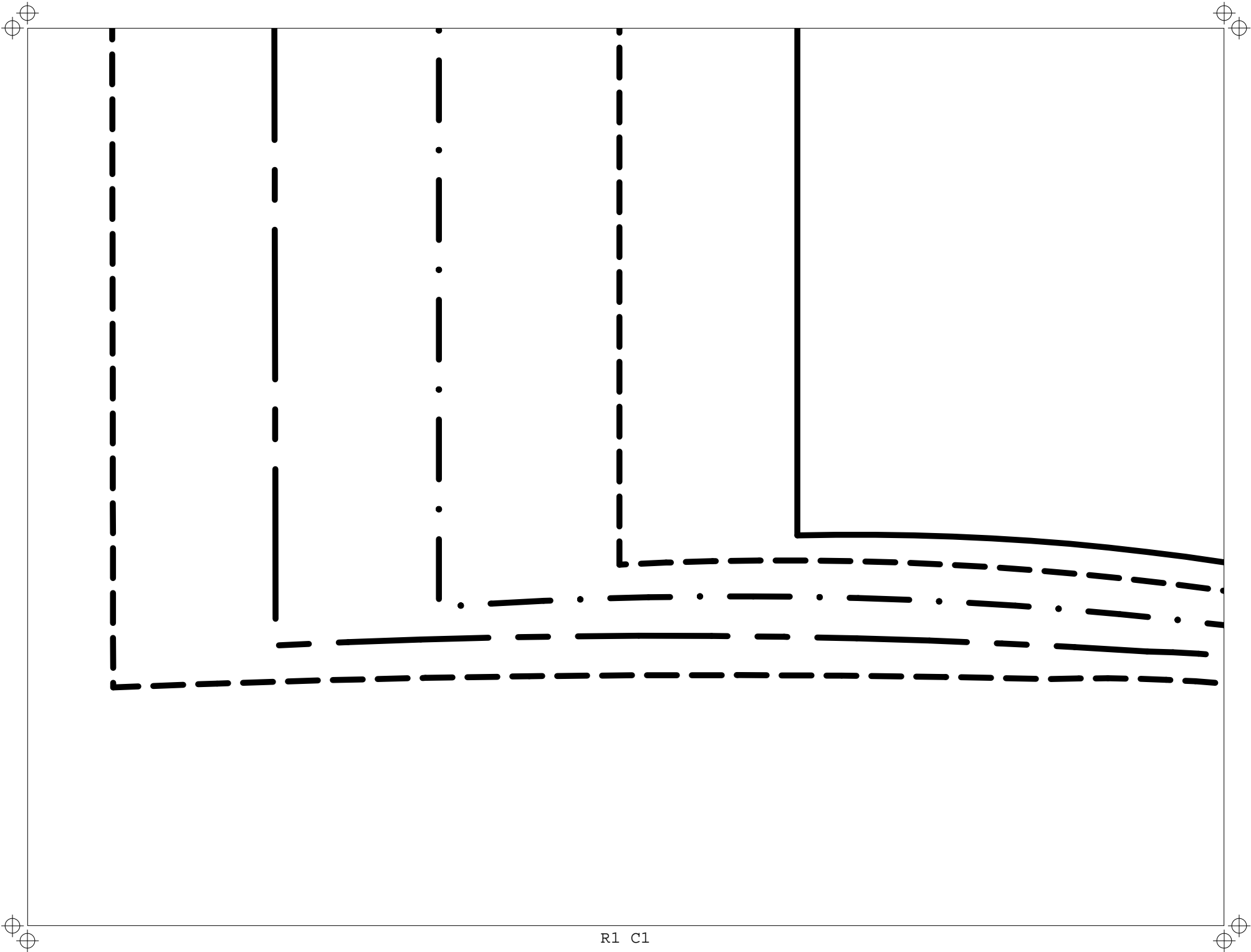
Before printing the pattern pieces, check your printing options to be sure that "rotate and center" is selected and sizing options such as "fit to page" are **not** selected. Each page is marked with a row number and a column number to help with lining up the pages. All pages will overlap 1" on each side.

When properly pieced, your completed pattern should look like the graphic to the left.

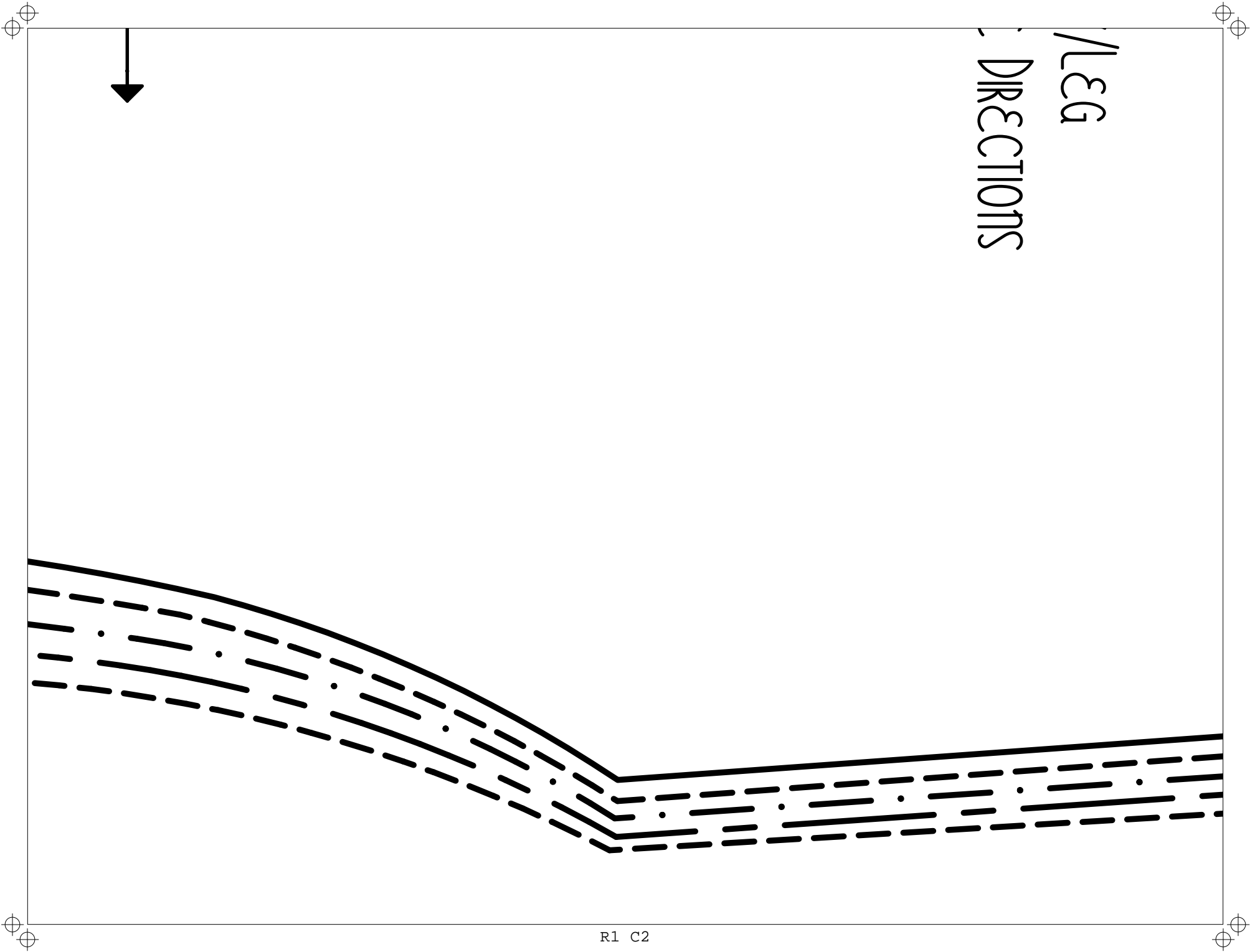
A Note on Sizing

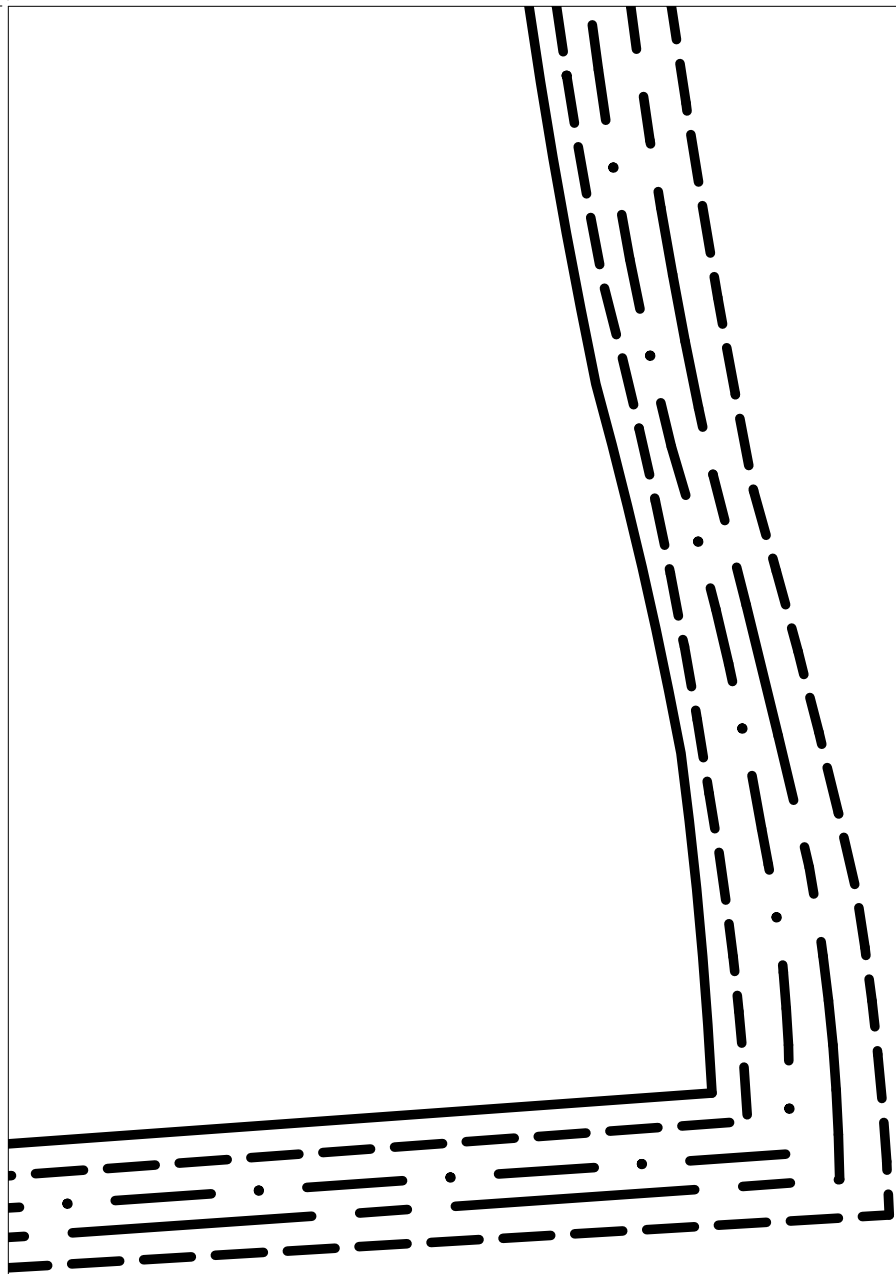
For a snugger fit on smaller-framed children, try sizing down one size from ready-to-wear and adding length to the body, sleeves and inseams.





R1 C1





STRETCH ON TRIM MUST GO
ACROSS FIRST MEASUREMENT.

WAISTBAND

CUT ONE EACH.

18 M 14 1/4" X 4"

2T: 14 1/2" X 4"

3T: 14 3/4" X 4"

4T: 15" X 4"

5T: 15 1/4" X 4"

LEG BANDS

CUT TWO EACH.

18 M 6 3/4" X 6 1/2"

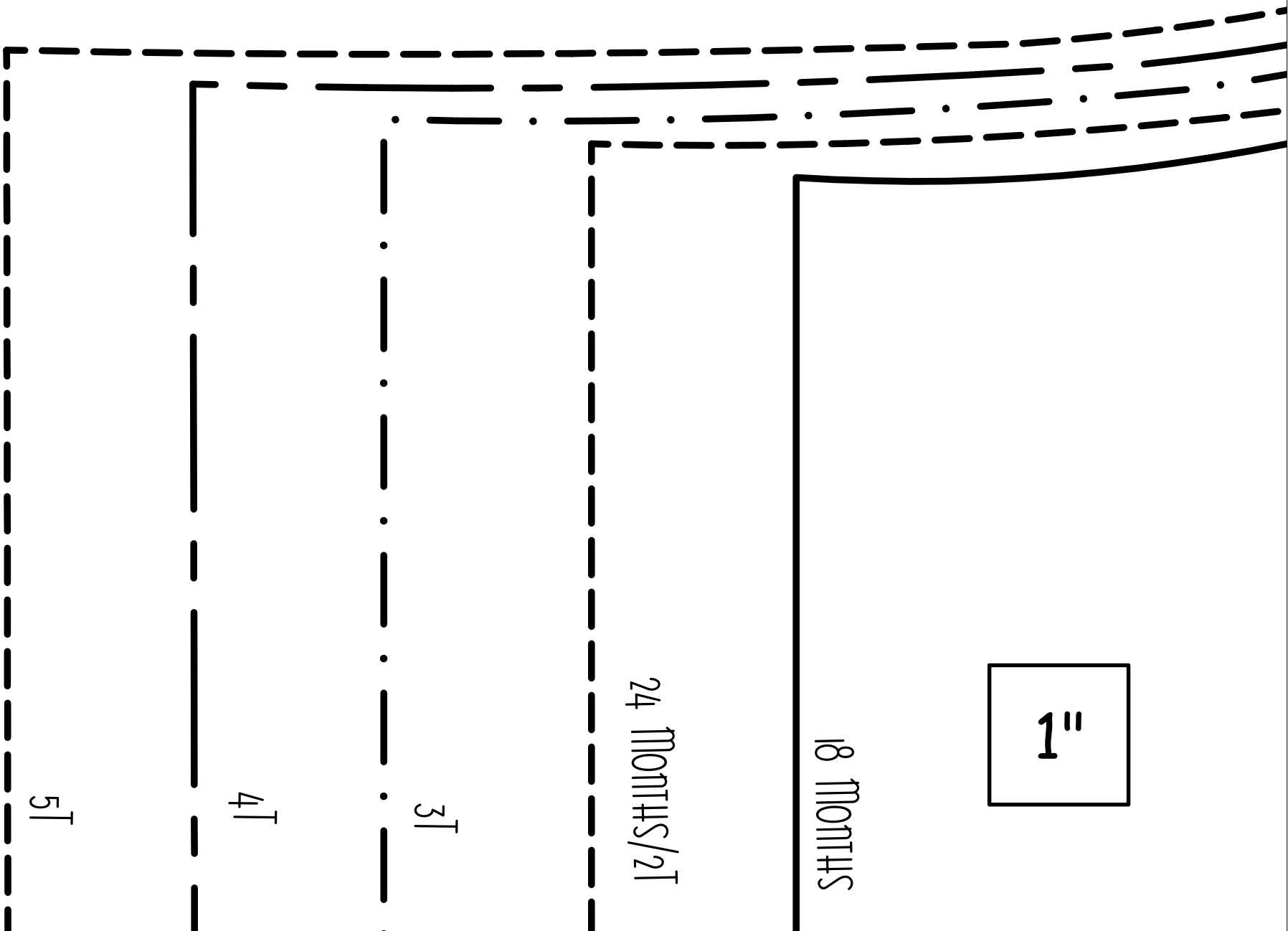
2T: 7" X 6 1/2"

3T: 7 1/4" X 6 1/2"

4T: 7 1/2" X 6 1/2"

5T: 7 3/4" X 6 3/4"





1=

18 MONTHS

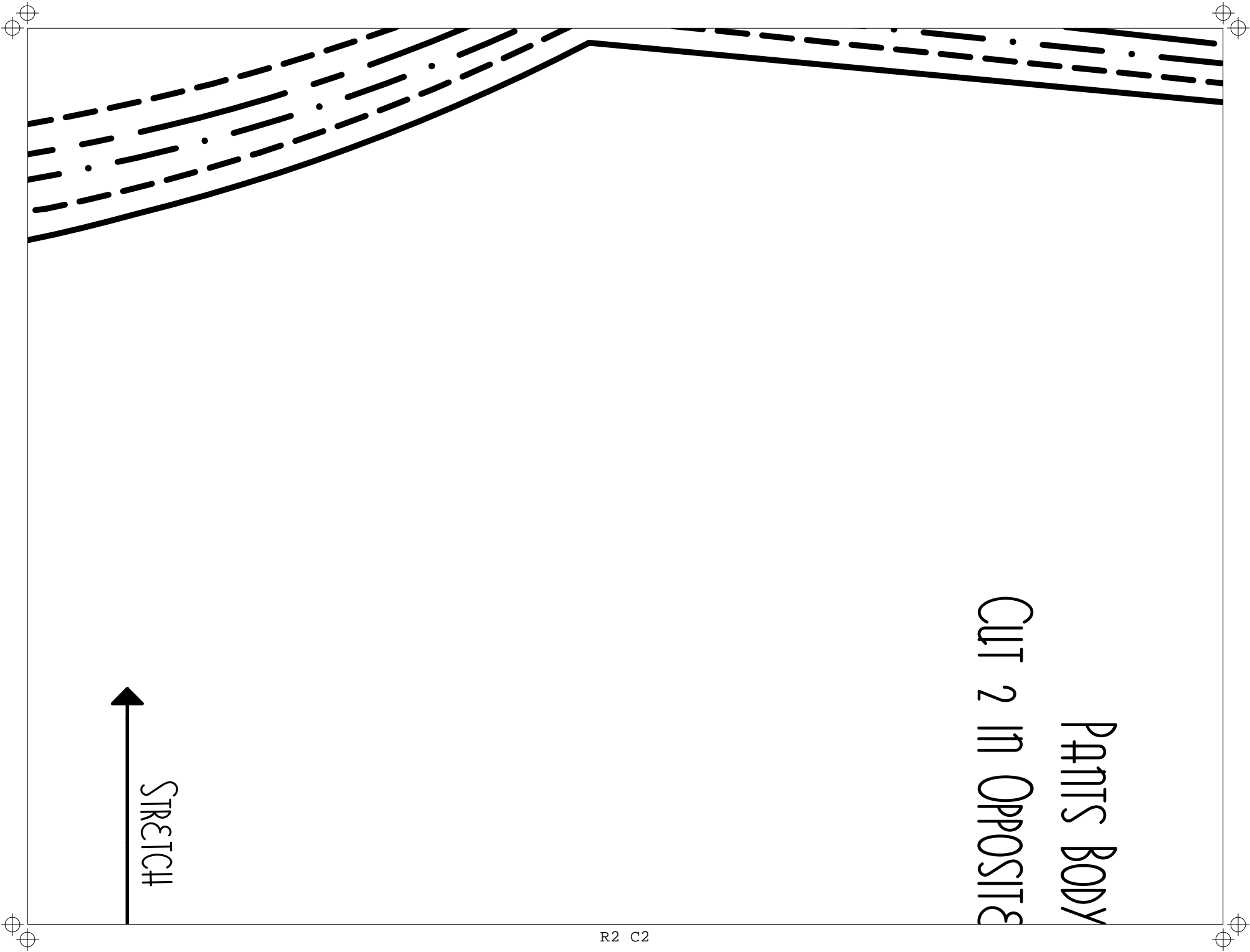
24 MONTHS/2T

3T

4T

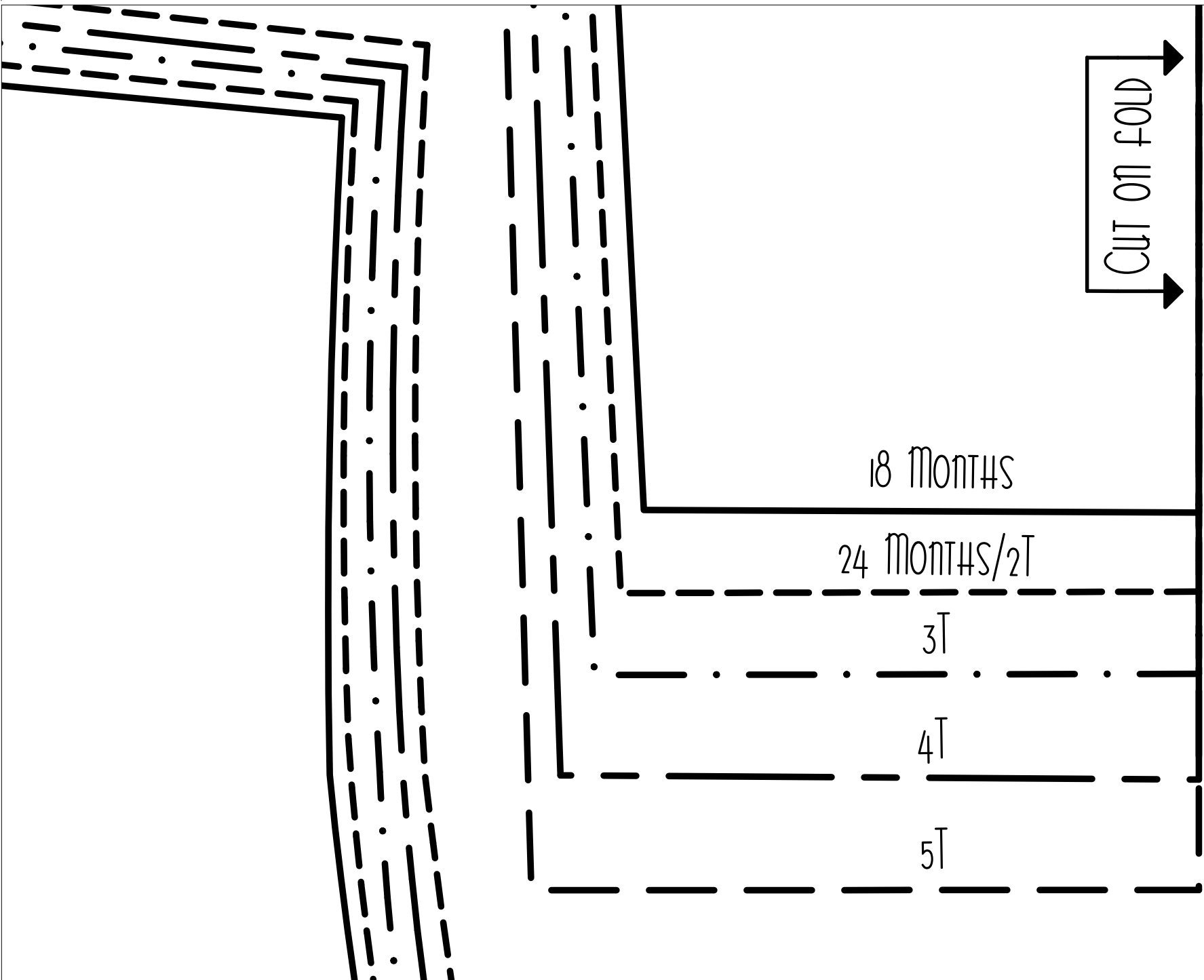
5T

R2 C1

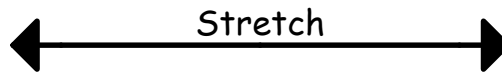


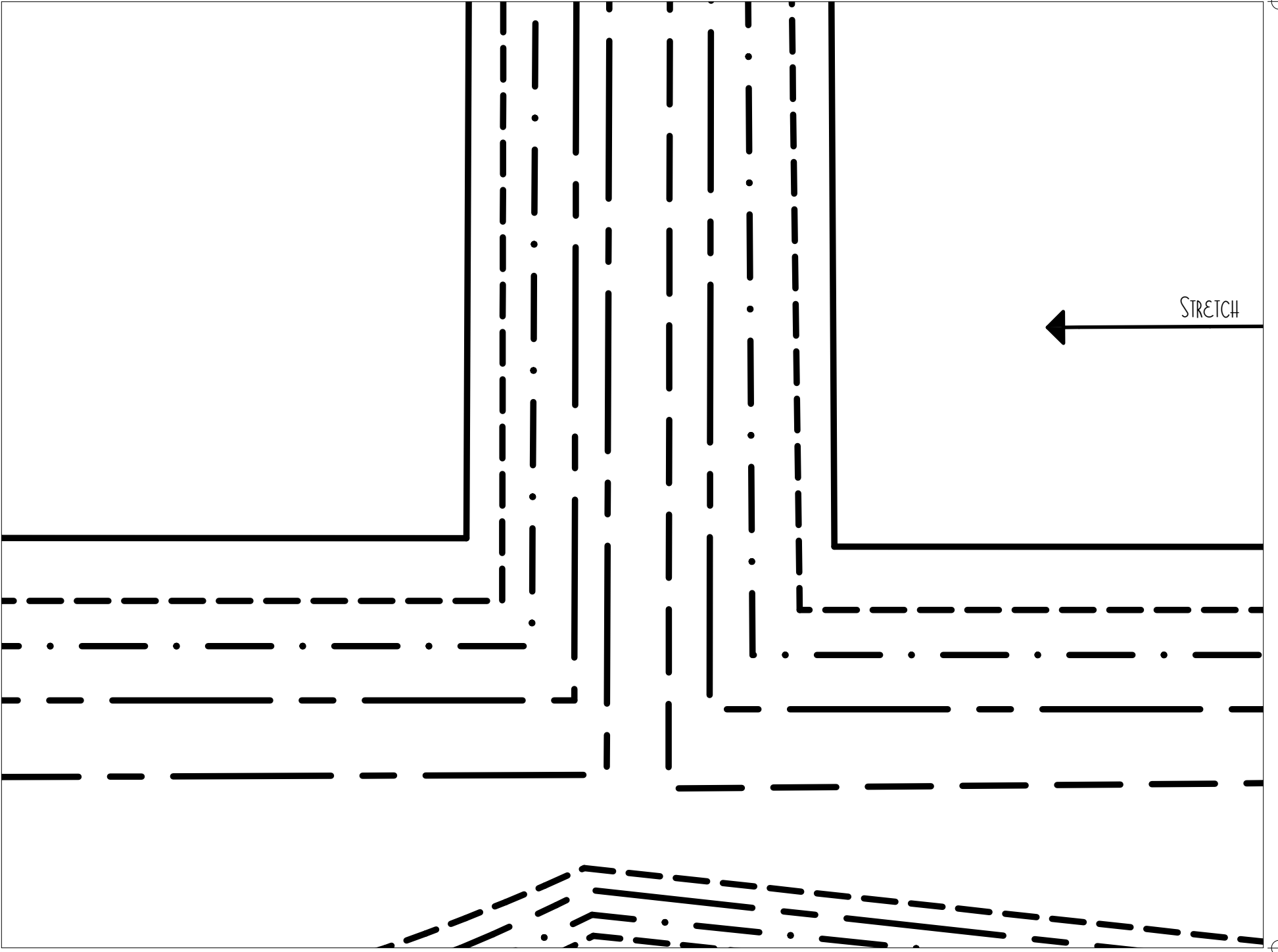
PANTS BODY
CUT 2 IN OPPOSITE

R2 C2



CUT 2 IN OPPOSITE DIRECTIONS

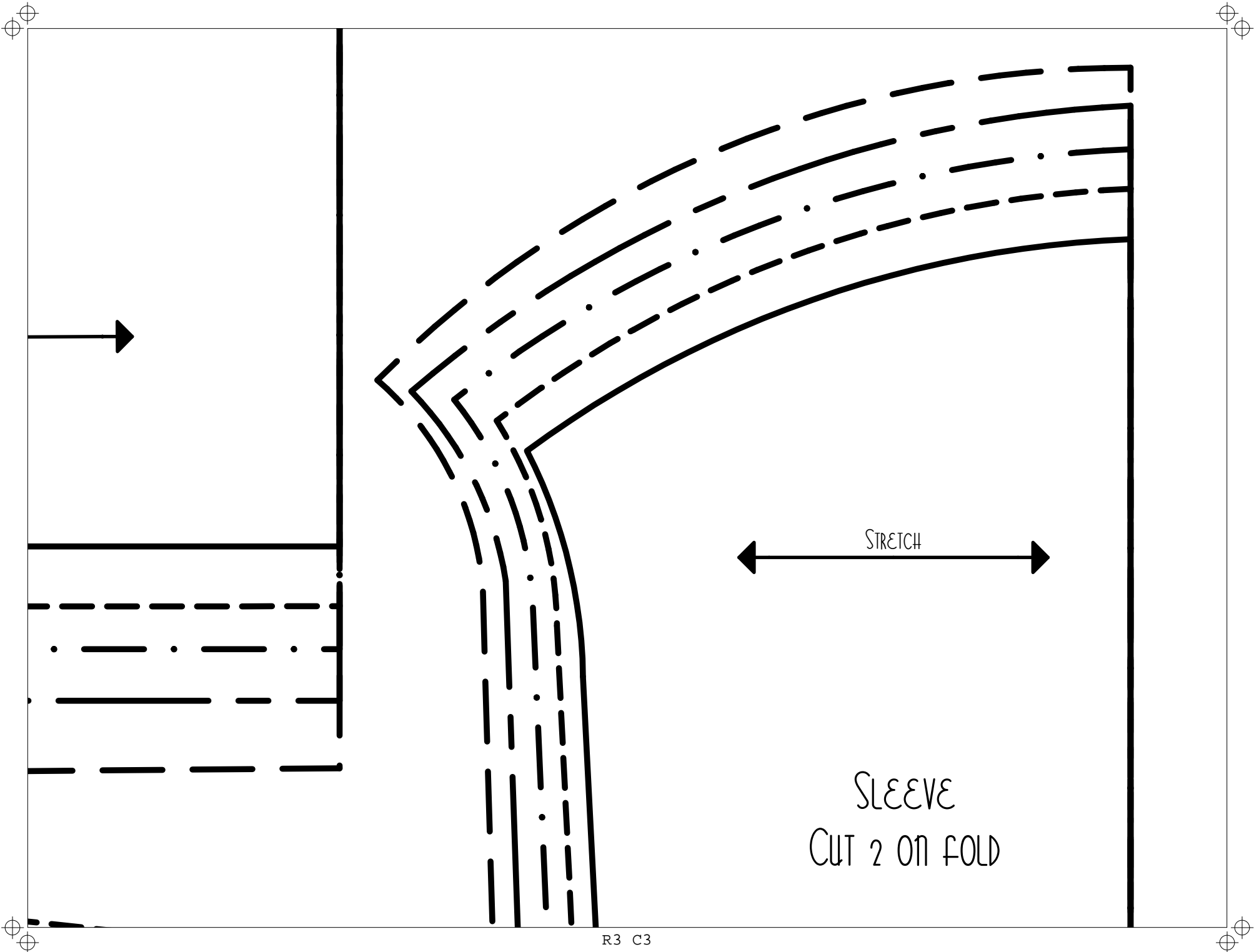




STRETCH

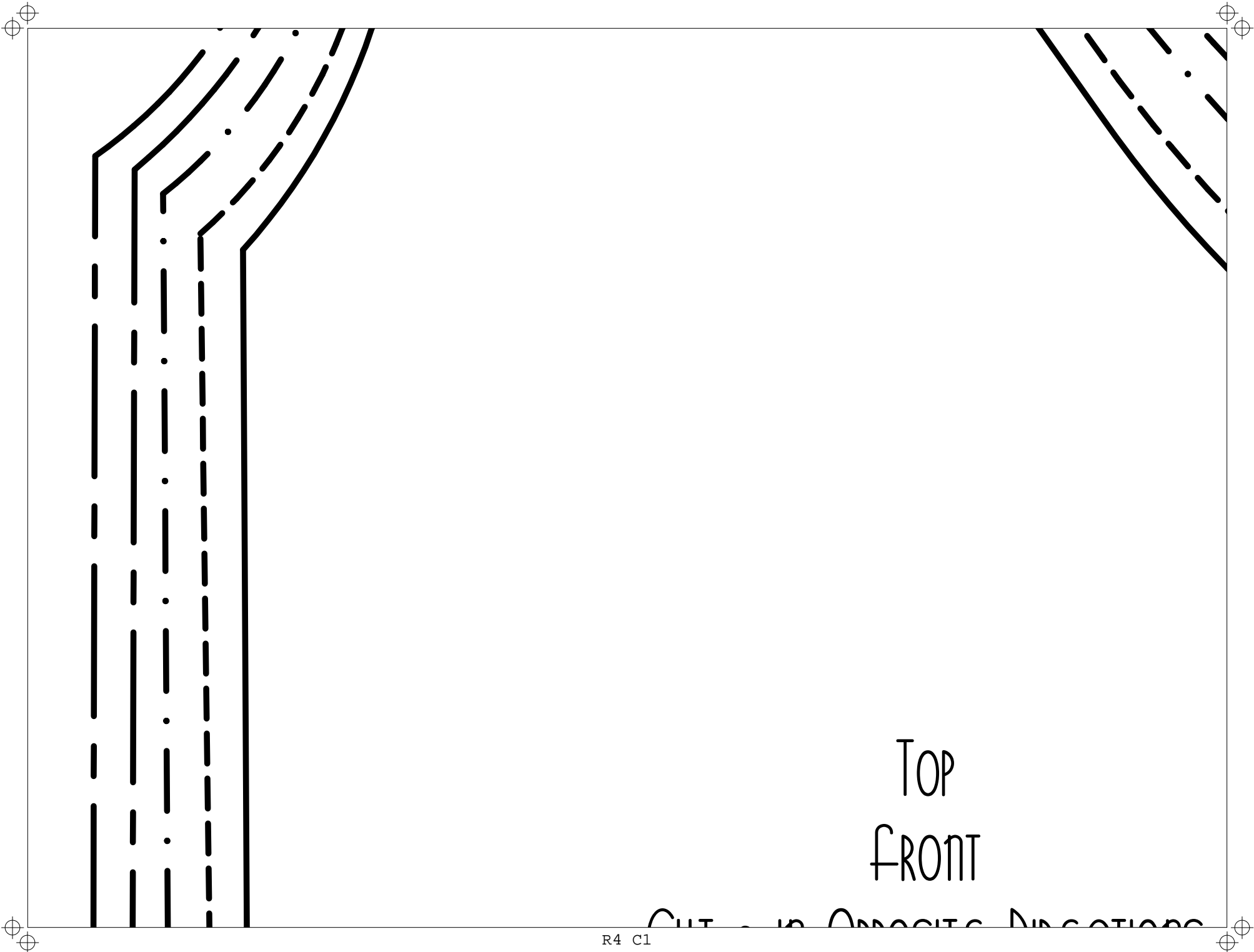
R3 C2





SLEEVE
CUT 2 ON FOLD

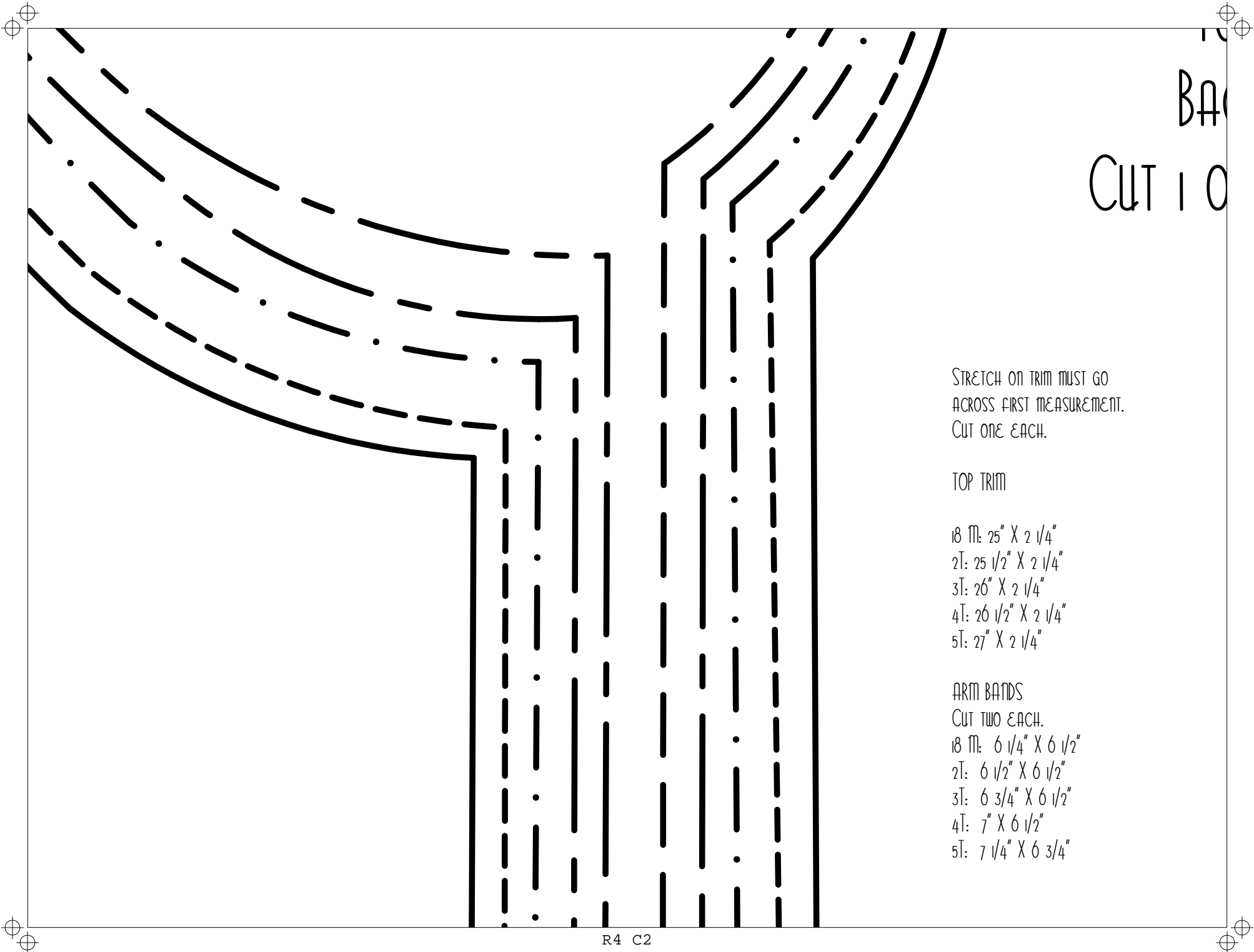
STRETCH



TOP
FRONT

CUT IN OPPOSITE DIRECTIONS

R4 C1



BACK
CUT 10

STRETCH ON TRIM MUST GO
ACROSS FIRST MEASUREMENT.
CUT ONE EACH.

TOP TRIM

- 1B M: 25" X 2 1/4"
- 2T: 25 1/2" X 2 1/4"
- 3T: 26" X 2 1/4"
- 4T: 26 1/2" X 2 1/4"
- 5T: 27" X 2 1/4"

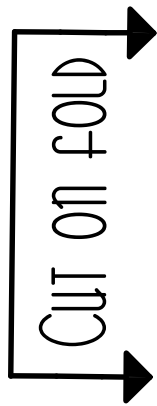
ARM BANDS

CUT TWO EACH.

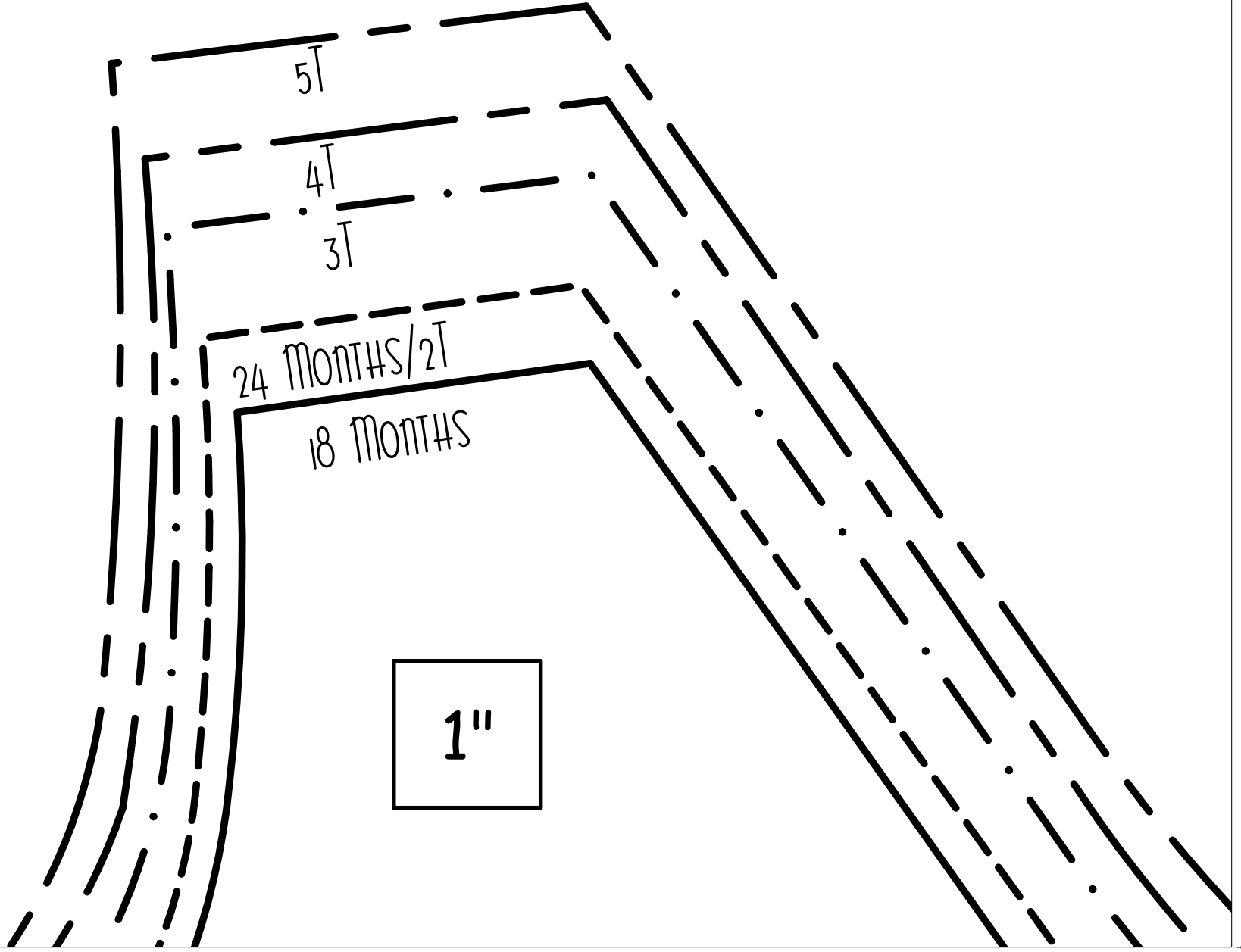
- 1B M: 6 1/4" X 6 1/2"
- 2T: 6 1/2" X 6 1/2"
- 3T: 6 3/4" X 6 1/2"
- 4T: 7" X 6 1/2"
- 5T: 7 1/4" X 6 3/4"

CK

ON FOLD



INSTRUCTIONS ON PAGE 121
OF THE SPRING 2011 EDITION
OF STITCH MAGAZINE. FIND IT
AT WWW.INTERWEAVESTORE.COM
OR YOUR LOCAL CRAFT STORE.



COMFY SLEEP SET PATTERN 18 MONTHS TO 5T

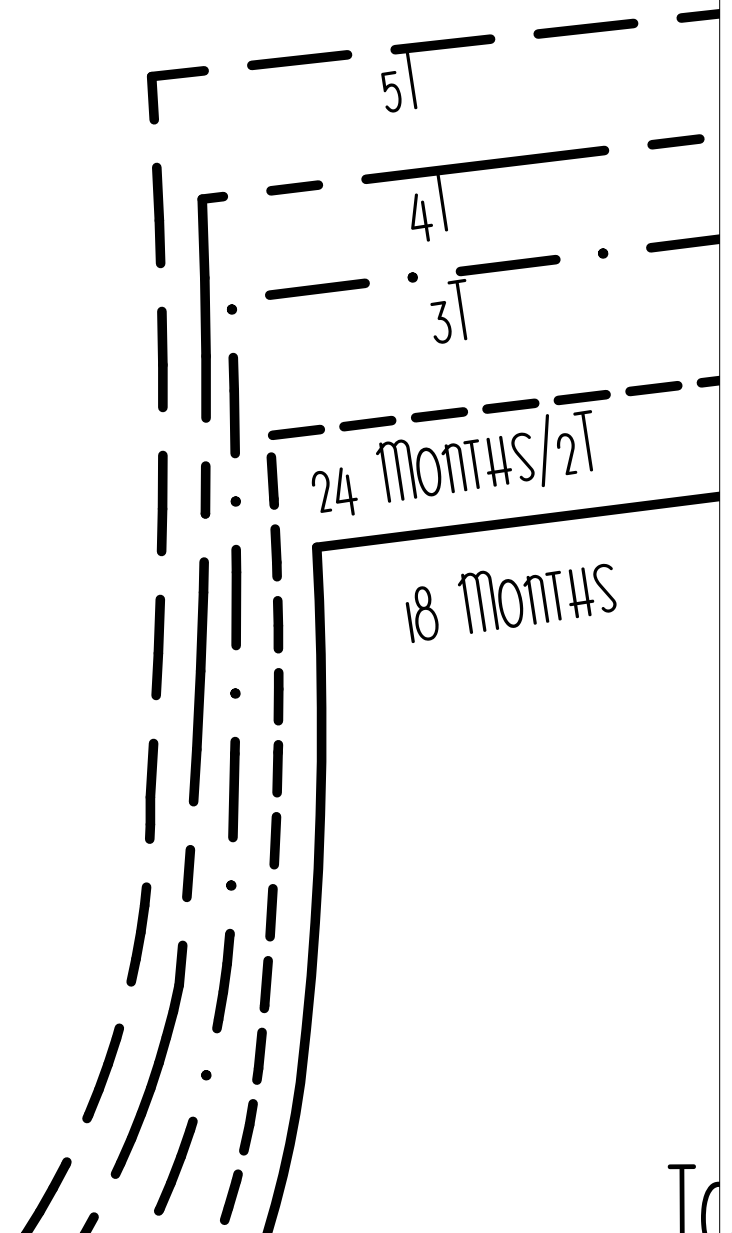


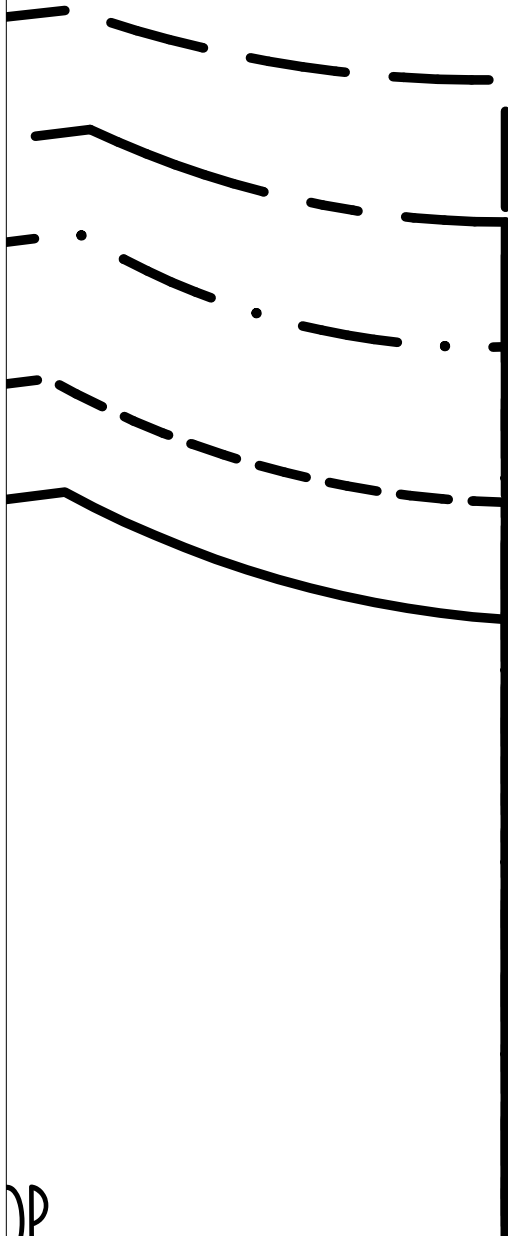
WWW.FISHSTICKSDESIGNS.COM

FISHSTICKS DESIGNS

COPYRIGHT 2011

WWW.FISHSTICKSDESIGNS.COM





PATTERN KEY



PLACE ON FOLD OF FABRIC



STRETCH (POSITION PATTERN ON FABRIC WITH STRETCH GOING THIS DIRECTION, USUALLY PERPENDICULAR TO THE GRAIN/SELVAGE.)